

# TEXTBOOK PRODUCTION & DISTRIBUTION MANAGEMENT SYSTEM

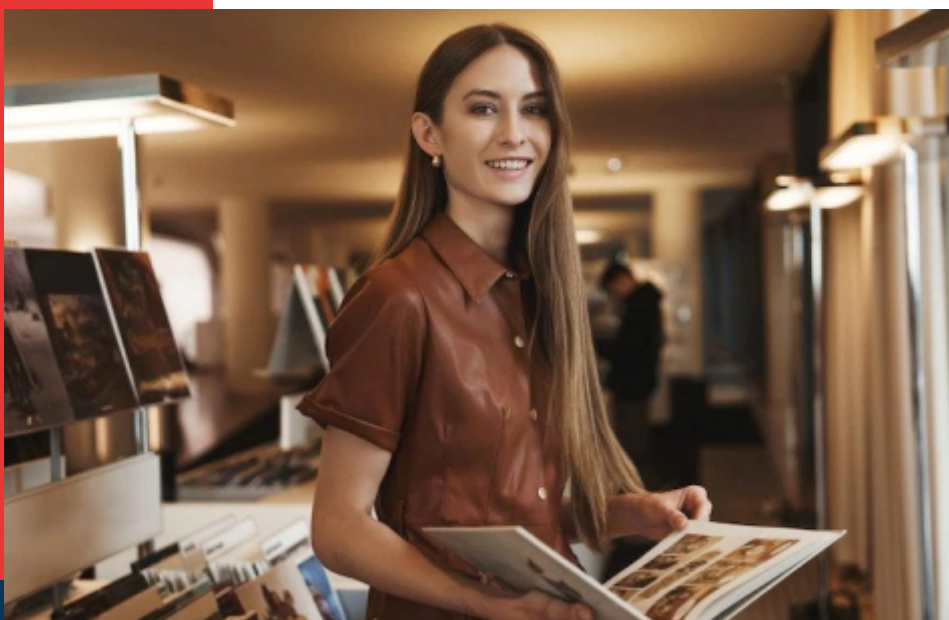


# About Product

C-Net's "Textbook Production & Distribution Management System" is a fully integrated web based solution for effective management and administration of a large Textbook production and distribution organization. It is a web based software product developed by the genius and dedicated IT professionals of C-Net. We have dedicated team of IT Professionals who provides 24\*7 technical supports to our prestigious clients. This software product has been developed in such a way that it can be duly customized to the clients need in no time.

Aims behind the product "Textbook Production & Distribution Management System" is to reducing the administrative burden for Textbook production and distribution organization Officials and staff by leveraging IT as an enabler for management of various processes of institution. The objectives of the product are:

- a) To streamline the operation processes of the Depot.
- b) To establish an efficient and effective tracking system for the books published by Textbook production and distribution institution.
- c) To establish an effective stock management system.
- d) To improve the overall operational efficiency of Textbook production and distribution institution, by removing redundancy and duplication of work efforts from the system.
- e) To improve transparency and accountability in the overall system.
- f) Extensive Capacity Building and training of officers and field level functionaries to ensure smooth migration to electronic systems.
- g) Reducing administrative burden, time & costs for the Government & businesses.





## Features

- 📖 **Printing Section:** This module will essentially cater to the needs of printing section of Textbook production and distribution institution. This module consists of various sub-modules like Printers profile, Project Management, Delivery, Printer Billing Management, Demand Grouping, Academic Section etc.
- 📖 **Distribution Section:** This module will essentially cater to the needs of distribution section of the Institution. This module consists of various sub-modules like Demand Generation, Depot Management, Transport etc.
- 📖 **Printer Section:** This module will essentially cater to the needs of the printers. The login to the printer module is made through the username and password created by the Printing section through Printer's profile module. This module consists of various sub-modules like Printer Dispatch, Printer Billing, Paper Request, Printer Daily Reporting etc.
- 📖 **Depot Section:** This module will essentially cater to the needs of individual depots of the Corporation. The login to the Depot module is made through the username and password created by the Distribution section through the Depot Management Module. This module consists of various sub-modules like Warehouse, Distributor/ Reseller Profile Management, Book Sale & Transfer, Books Return, Demand, Advance Request, Tax Reports, Security Deposit, Depot Store etc.
- 📖 **Paper Section:** This module will essentially cater to the needs of Paper Section of the Corporation. This module consists of various sub-modules like Central Paper Depot, Paper Vendor Profile Management, Paper Order and Billing, Paper Dispatch etc.
- 📖 **Accounts Section:** This module will essentially cater to the needs of Accounts Section and various other sections of the Corporation. This module consists of various sub-modules like Billing, Payroll and Advance Payments, EMD/Tender Fee/ Other Security Deposit Management, Tax Reports, Cashier etc.
- 📖 **HR Section:** This module will essentially cater to the needs of establishment Department, stores, tender evaluation and various other functions. This module consists of various sub-modules like service Record, Payrolls Loans and Advances Monitoring, Store, Tender Evaluation, Legal Administration etc.
- 📖 **Grievance Redressal Section:** This module will essentially cater to register and address the grievances and complaints by the vendors and employees of the Corporation. This module consists of various sub-modules like Complaint/ Query Registration.

### **Technologies Used:**

Front End- C# .Net, ASP. Net

Back End: MySql,

Others: HTML, CSS, JavaScript, Jquery, Ajax, SSRS



## **C-NET INFOTECH PVT. LTD.**

E-5/4, I & II Floor, Commercial Area,  
Arera Colony, Bhopal - 462016.

Tel : +91-755-4096900, Fax : +91-755-4096907

E-mail : [info@cnet-india.com](mailto:info@cnet-india.com)